



Design for People , Perform for Experience

Content

01

About Us

— p. 02 —

02

Partner & Clients

— p. 02 —

03

Services

— p. 02 —

04

Projects

— p. 02 —

05

Project implementation process

— p. 02 —

01 About Us



H2X
STUDIO

H2X Studio is a pioneering brand that has been affirmed in the market in the high-end segment, with strengths in the field of hotel, resort, and luxury villa design. We provide comprehensive solutions in planning, architecture, interior and landscape.

With practical experience and success in designing the most luxurious 5-star projects in Vietnam such as Gran Melia Nha Trang, New World, Accor, Hyatt... H2X Studio has applied practical experience to design projects in the most luxurious segment, with very high functional logic, as well as ensuring distinct aesthetics for each project.

The Ecosystem



H2X Studio sits at the creative core of the EuroStyle Ecosystem, working in close partnership with EuroStyle Living and EuroStyle Engineering & Construction. Together, the three entities form a fully integrated platform that bridges design vision, curated products, and technical execution.

EuroStyle Living brings lifestyle brands, furniture, and materials, while EuroStyle Engineering & Construction ensures engineering rigor and buildability. H2X Studio connects these strengths through narrative-driven design, operational understanding, and experiential thinking. This collaborative structure allows projects to move seamlessly from concept to completion, delivering cohesive, high-quality environments for branded residences, hospitality, and F&B projects with clarity, consistency, and long-term value.



Gia Huy Michael

Co-Founder | Creative Director



Alfredo Aguirre

Materials & Operation Consultant



Phuc Bui

F&B Design Manager



Vy Nguyen

FF&E Design Manager

Human Resources

Gathering creative, dynamic, experienced members in European Architectural design environments such as the UK and the Spain, Sweden, combined with modern technology in the process of conceptualizing and implementing designs, we will bring to our customers luxurious, classy projects with their own personality at the most effective cost and progress.



Thao Mai

Residential Design Manager



Linh Nguyen

Technical Manager



Duong Vuong

Architectural Manager



Mr. Gia Huy Michael

Founder – Creative Director

Education

Master of Architecture – Hanoi University of Civil Engineering

Certificate in Housing from Vietnam Architectural Research Institute and Lund Institute, Sweden

Certificate of Eligibility for Bidding

Practicing Certificate for Construction Project Management

Experience

23 years of experience working in the field of Architecture & Interior Design in Vietnam.

More than 15 years of working in 5-star Luxury projects with international operators such as Sunset Hospitality, Accor, Marriott International, IHG, Meliá International... Capable of rich, creative and idea-rich Design thinking. Continuously innovative thinking to have deep understanding and breakthroughs in the smooth coordination of materials and lighting, applying the latest technology.

Featured projects

- ◇ Super Yacht Building – Villa Le Corail Gran Meliá Nha Trang
- ◇ Golf Course Villa Nick Faldo Silk Path – Quang Ninh
- ◇ Armani Casa Villa – BIM Group – Suite by inter Continental
- ◇ The coral villas furnished by Roberto Cavalli Home Interiors – Gran Meliá Nha Trang
- ◇ The coral villas inspired by GT115 Yacht – Gran Meliá Nha Trang
- ◇ Hispania Restaurant- 2* Michellin – Gran Meliá Nha Trang
- ◇ Miwaku Restaurant 80th Floor – Landmark 81 SaiGon



Mr. Alfredo Aguirre Colores

Materials & Operation Consultant

Education

MBA Mandrid, University of Wolverhampton Business School UK, MBA Spain.

Experience

25 years of experience in F&B, High-end Luxury segment projects, European Life Style.

12 years of experience in the Vietnamese market as a senior consultant with the ability to combine deep understanding of concept operation to materials – Mood & tone to create sophisticated and inspiring aesthetic values.

Featured projects

Super Yacht Building – Villa Le Corail Gran Meliá Nha Trang

Golf Course Villa Nick Faldo Silk Path – Quang Ninh

Armani Casa Villa – BIM Group – Suite by inter Continental

The coral villas furnished by Roberto Cavalli Home Interiors – Gran Meliá Nha Trang

The coral villas inspired by GT115 Yacht – Gran Meliá Nha Trang

Hispania Restaurant– 2* Michellin – Gran Meliá Nha Trang

Miwaku Restaurant 80th Floor – Landmark 81 SaiGon



Ms. Phuc Bui

F&B Concept Manager

Education

Bachelor of Architecture – Hanoi University of Civil Engineering.

Experience

15 years of experience in the field of interior and exterior design of residential, office, resort, villa projects, 05 years in management position, working directly with domestic and foreign partners. Has extensive knowledge of high-end product lines such as: Roberto Cavalli, Porcelanosa, Minotti, Clestra, Luadi, ..

Featured projects

- Vega city Nha Trang, 6 Star Hospitality Complex
- High-rise buildings: Hateco Building, Florence Building
- Chain stores in Vinmeco shopping center
- Office furniture Exon lab headoffice, Winmart, Phoenix, FPT software Building
- Silkpath Golf Villa – BR4, BR5
- Hispania Restaurant – 3* Michellin & Signature Restaurant – Grand Melia Nha Trang
- Miwaku Restaurant – 80Th Floor – Landmark 81 HCM city
- Attiko – Hanu Restaurant – Diamond Crown – Hai Phong



Ms. Vy Nguyen

FF&E Manager

Education

Bachelor of Interior and Exterior Design,
Ho Chi Minh City University of Architecture

Experience

18 years of experience in interior project management
05 years of experience in managing interior materials, imported furniture and interior finishing for high-end projects

Featured projects

- Model House Projects: Ecopark, Smart City, Vinhomes Riverside
- Novaland Public Works
- Vega City Nha Trang – 6-star hotel complex
- Silkpath Golf Course Villa – BR4, BR5
- Grandbay Villa – Hung Thang, Quang Ninh
- Hispania Restaurant – 3* Michellin – Gran Meliá Nha Trang
- Signature Restaurant – Grand Melia Nha Trang
- Miwaku Restaurant – 80th Floor, Landmark 81, Ho Chi Minh City
- Attiko & Hanu Restaurant – Diamond Crown, Hai Phong



Ms. Thao Mai

Residentail Concept Manager

Education

Bachelor of Architecture
Hanoi University of Civil Engineering

Experience

15 years of experience in the field of interior and exterior design for buildings, offices, resorts and villas, I have the ability to work effectively in a professional, high-standard environment of large corporations. Deep understanding of international design implementation processes, at the same time possessing a refined aesthetic taste and modern design thinking

Featured projects

- Vega city NhaTrang, 6 Star Hospitality Complex
- Silkpath Golf Villa – BR4, BR5
- Hispania Restaurant – 3* Michellin & Signature Restaurant – Grand Melia Nha Trang
- Miwaku Restaurant – 80Th Floor – Landmark 81 HCM city
- Attiko – Hanu Restaurant – Diamond Crown – Hai Phong



Mr. Linh Nguyen

Technical Manager

Education

Bachelor of Architecture
Hanoi University of Civil Engineering

Experience

21 years of experience in the field of Architecture and Interior Design in Vietnam, has participated in designing and implementing many diverse projects, from high-end to super luxury projects. Of which, more than 5 years of experience in implementing 5-star hotel and resort projects. Solid knowledge of construction techniques, construction materials and engineering systems, including MEP (Mechanical – Electrical – Water) and HVAC (Air conditioning). Combining understanding and multidisciplinary coordination ability to ensure design quality and construction efficiency in each project.

Featured projects

- Grand Villa Ecopark – 6th Island
- Presidential Residence Complex – BIM Group
- Long An Provincial Administrative Center
- Showroom Minotti 2ND Nguyen Thai Hoc Street – H2X Triangle Heritage Building
- Miwaku Restaurant – Landmark 81 Hồ Chí Minh
- 26th Trần Hưng Đạo Street – H2X Headquarters



Mr. Duong Vuong

Architecture Manager

Education

Bachelor of Architecture – Hanoi University of Architecture

Experience

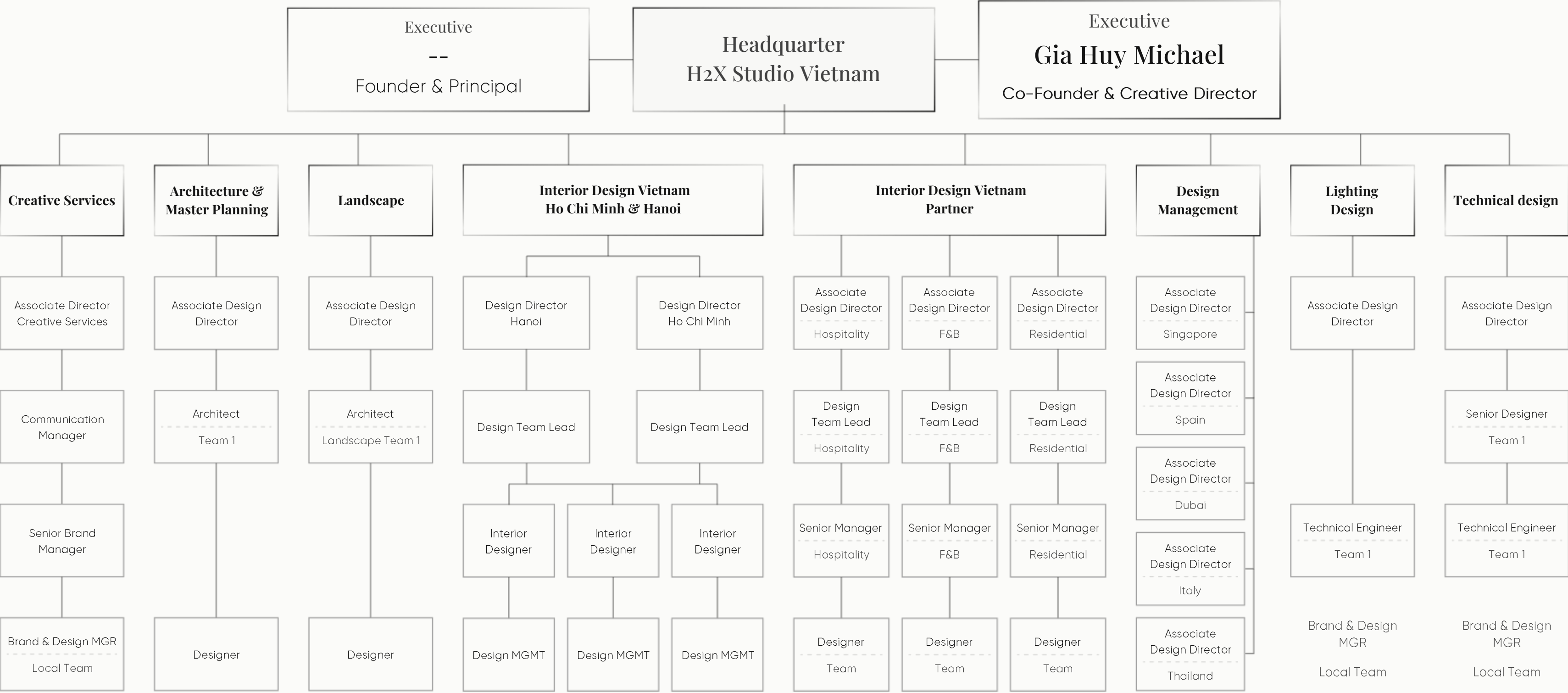
17 years of experience working in the field of Architecture & Interior Design in Vietnam.

More than 10 years working in 5-star Luxury projects with international operators such as Sunset Hospitality, Accor, Marriott International, IHG, Meliá International... Ability to think creatively, research and apply new materials and technologies in design.

Featured projects

- Movenpick Hotel Ha Noi: 5-Star French-style hotel
- Nick Faldo Silk Path Villa Resort & Golf Area – Quang Ninh
- Armani Casa Residence Area – BIM Group
- The coral villas furnished by Roberto Cavalli Home Interiors – Gran Meliá Nha Trang
- The coral villas inspired by GT115 Yacht – Gran Meliá Nha Trang

Human Resources Organization Chart



01

02

03

Partner & Clients

Partner



Client



03 Services

H2X Studio undertakes a variety of services, providing comprehensive solutions from project management and development to architectural and interior design.

Solving problems and meeting the comprehensive needs of customers has become the strength of H2X Studio . From the aesthetic and functional requirements set forth by customers, our services help to save maximum effort for customers from the most detailed tasks requiring expertise such as contractor selection, bidding, regular inspection and reporting, implementation progress management, effective control of technical issues, costs and contractors.



Project Development

- ◆ Develop ideas, invest in projects and develop distribution strategies.
- ◆ In-depth analysis, determining appropriate development type, scale, marketing and business strategies.
- ◆ Ensure optimal investment efficiency.



Architecture & Interior Design

- ◆ Create interior spaces with over 40 of the world's leading luxury brands.
- ◆ Leading in branded projects, elevating lifestyle
- ◆ Breakthrough design solutions, optimizing functionality & aesthetics.
- ◆ Design for the ultimate living experience.



Budget Management

- ◆ Optimal resource and budget planning, effective risk management.
- ◆ Establish complete processes for best quality control.

03

04

Projects

05

Resorts & Hotels

- ◇ Villa Le Corail, A Gran Meliá Hotel, Nha Trang
- ◇ New World Hotels, Nha Trang
- ◇ Silkpath Dong trieu Golf course, Dong Trieu, Quangninh – by Nick Faldo
- ◇ CT10 – Melia Hotels, Nha Trang
- ◇ Sora bay halong – BIM suite by Intercon
- ◇ JW Marriott Autograph collection
- ◇ Sofitel Diamond Crown – by Accor

Luxury & Branded Residences

- ◇ The Coral Artistry 1 & 2, Nha Trang
- ◇ The Coral Villa inspired by GT115 Yacht, Nha Trang
- ◇ The Coral Villa furnished by Roberto Cavalli Home Interiors, Nha Trang
- ◇ Armani Casa & Bruno Zampa Branded Villa, Grand Bay Hạ Long
- ◇ Minotti Branded Grand Villa – Grand Bay Hạ Long
- ◇ Golf Nick Faldo Villa – silk path dong trieu Golf course, Quangninh
- ◇ VIP C – Presidential Suite – Billionaire Island, Nha Trang
- ◇ Ciputra Villa, Ha Noi
- ◇ Ecopark Grand Island Villa, Ha Noi
- ◇ Vinhomes Ba Trieu Penthouse, Ha Noi
- ◇ Vinhomes Nguyen Chi Thanh Apartment, Ha Noi
- ◇ Golden Westlake Penthouse, Ha Noi
- ◇ Vinhomes Riverside Anh Dao, Ha Noi
- ◇ Vinhomes Riverside Hoa Phuong, Ha Noi
- ◇ Bang Lang Vinhomes Villa, Ha Noi
- ◇ Shophouse Hung Thang, Quang Ninh
- ◇ Shophouse Libera Nha Trang
- ◇ Crystal Bay Villa, Bai Thung

Food & Beverage

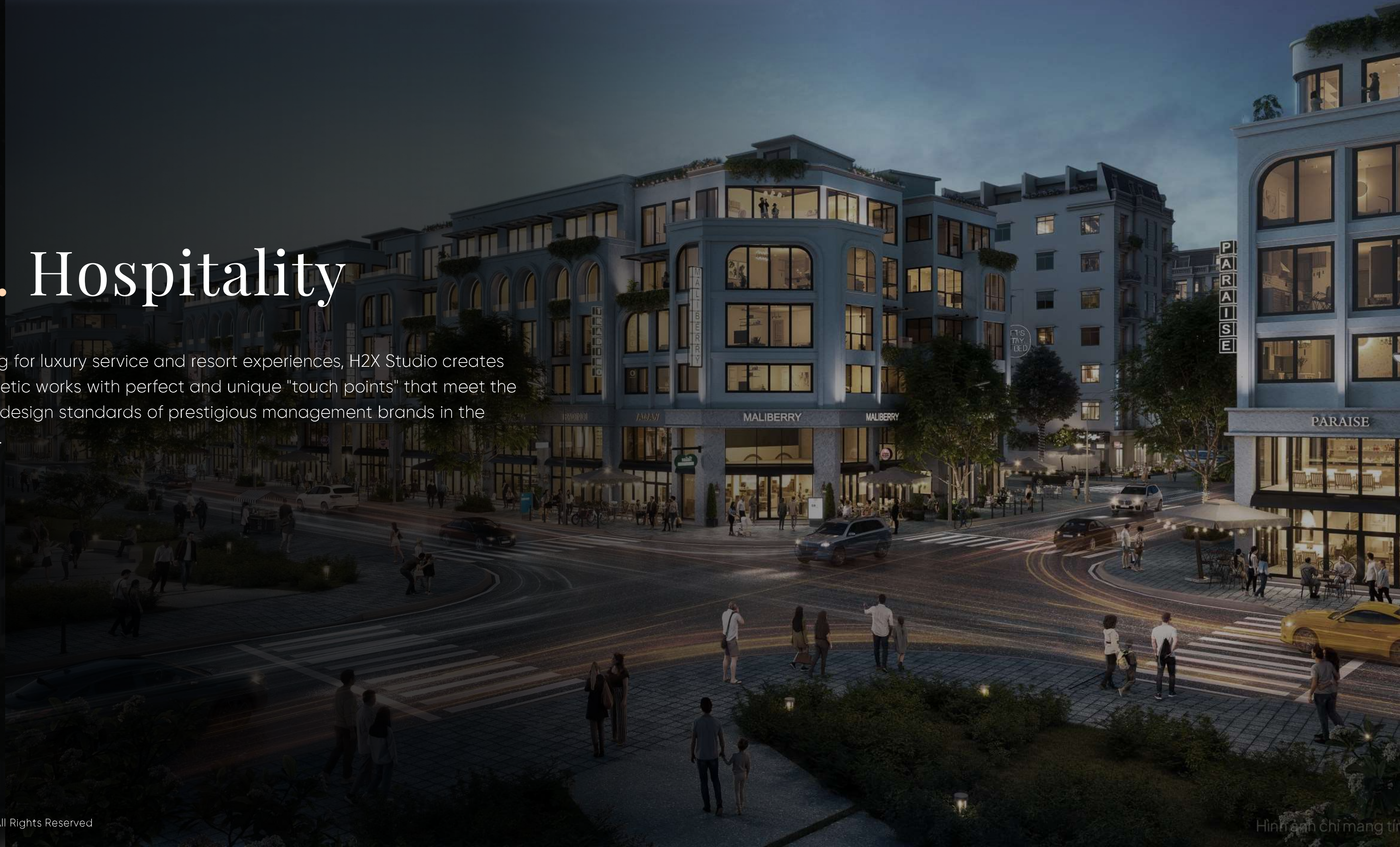
- ◇ Hanu Restaurant, Hai Phong
- ◇ Attiko – High energy Lounge, Hai Phong
- ◇ Nonêe Restaurant, Ha Noi
- ◇ Hispania, Nha Trang (Italian Branded Restaurant) – gran melia nha trang
- ◇ Theia Lounge, Nha Trang – gran melia nha trang
- ◇ Shibui, Nha Trang (Japanese Specialty Restaurant) – gran melia nha trang
- ◇ Natura, Nha Trang (All Day Dining) – gran melia nha trang
- ◇ MIWAKU Restaurant – Landmark 81 – HCM City

Lifestyle & Office Space

- ◇ H2X Heritage Center, Ha Noi
- ◇ Minotti Monobrand Showroom – Hanoi
- ◇ Arclinea Monobrand Showroom – Hanoi
- ◇ Private Member Club – One Heritage – Quan Thanh – Hanoi
- ◇ SharkTank Penthouse Film Studio
- ◇ Vega HOLIDAYS Office, Ha Noi – Nha Trang – Ho Chi Minh
- ◇ Long An Administrative Center – Long An
- ◇ H2X Headquarters – Hanoi & HCM city
- ◇ Honda Showroom – HCM City

A. Hospitality

Aiming for luxury service and resort experiences, H2X Studio creates aesthetic works with perfect and unique "touch points" that meet the strict design standards of prestigious management brands in the world.





Gran Meliá 6★ Hotel & Resorts – Libera Nha Trang

Acreage	Year of completion	Investor	Investment value
43,81 HA	2023	KDI Holdings	13.000 Billion VND

As a key project of KDI Holdings Group, Libera Nha Trang is the first and only coastal art – resort – entertainment complex in Nha Trang. The project scale includes 43.81 hectares, including the construction of about 1,400 hotel rooms, 99 6–star super resort villas and 168 shophouses.



Gran Meliá 6★ Hotel & Resorts – Libera Nha Trang

Year of completion

2023

Implementation items

Super Yacht Building 99 Unique Villas Including The Coral Special Editions Collection

The villa and residence project in Gran Meliá Nha Trang, now renamed Villa Le Corail, is a subdivision of the coastal Art – Resort – Entertainment complex in Libera Nha Trang. The subdivision provides the market with super products, which are luxury coral island residences in cooperation with Meliá Hotels International – a world-renowned management brand.

With the motto “A life well lived”, Gran Melia Nha Trang promises to bring visitors unforgettable experiences, from journeys imbued with local culture to luxurious privileges and services right in the resort.

As the design unit for the project, H2X Studio is proud to contribute to creating a coastal paradise that blends the beauty of the Mediterranean and the charm of Vietnamese soul, redefining the concept of luxury resorts, realizing the dream vacation of high-class customers and contributing to bringing the image of a prosperous Vietnam to the world.



Gran Meliá 6★ Hotes & Resorts – Libera Nha Trang

The super Yacht Building

Acreage	Design style	Implementation items	Project implementation
10.000 m²	Modern meets Tropical,Mediterranean	Architecture & Interior Design,ID Concept	Theia Lounge ♦ Wanderlust Children's Playground ♦ Song Spa ♦ Shibui Japanese Restaurant ♦ Michelin Star Restaurant Hispania ♦ Natura Restaurant

Inspired by the image of a ship ready to set sail to conquer the ocean, the main building of Gran Meliá Nha Trang – Super Yacht Building is a unique architectural work, combining many different styles but still in harmony and creating a unique aesthetic, making a prominent architectural highlight for the entire area.

Located in the heart of Libera Nha Trang, Super Yacht Building is a multifunctional complex spanning three floors with a total area of 10,000m2, including many different projects, aiming to enhance functionality and aesthetics, connect adjacent buildings and provide services for customers visiting Gran Meliá Nha Trang.



Gran Meliá 6 ★ Hotes & Resorts – Libera Nha Trang

Villa Le Corail – 99 villas

Acreage	Design style	Implementation items
350m2 ~ 450 m²	Modern meets Tropical,Mediterranean	Architecture & Interior Design, ID Concept

Inspired by the elegance of Mediterranean coastal living, 99 Villa Le Corail at Gran Meliá Nha Trang is designed as an exclusive private retreat, harmoniously blending modern architecture with tropical nature. Each villa embodies a refined aesthetic, offering spacious layouts, open views, and a serene ambiance that highlights the natural beauty of the bay while ensuring utmost privacy for its residents.

Situated within the prestigious Gran Meliá Nha Trang complex, 99 Villa Le Corail features distinctive design details, luxurious amenities, and seamless integration with surrounding landscapes. This collection of villas not only elevates the living experience but also stands as a unique architectural highlight, complementing the overall grandeur of the resort and creating an unparalleled destination for discerning guests creating a unique aesthetic, making a prominent architectural highlight for the entire area.



Presidential Suite – New World Hotel

Project	Acreage	Design style	Implementation items
New World Hotel	300 m²	Modern & tropical	ID Concept Design

Presidential Suite is the most outstanding room in the 250-room complex of New World Nha Trang Hotel with a view overlooking the beautiful Nha Trang Bay.

Inspired by the beauty of the ocean: light, waves and wind, the Presidential Suite design is transformed into core ideas, bringing the main emotions into the design spaces.

Indigenous elements such as natural wood and bamboo are flexibly combined to create a sea-facing space imbued with Vietnamese identity, yet gentle and sophisticated.



—
PRIVE LOUNGE

Rixos Accor Ennismore – Nha Trang

Project	Design Style	Implementation items
Rixos 5* Hotel All-Inclusive	Modern	Concept ID Pitching



Silkpath Branded Villa – Nick Faldo Golf Course

Project

SilkPath Dongtrieu – Quangninh

Design Style

Modern

Implementation items

Interior design & architecture





Grand bay Halong Villas

Project	Design style	Implementation items	Management & Operation Unit
Grand Bay Halong – BIM Group	Hiện đại	Interior design & architecture	New World

Inspired by the breathtaking seascape of Hạ Long Bay, Grand Bay Hạ Long Villas are conceived as a collection of refined residences where modern luxury meets natural wonder. Each villa is carefully designed to capture panoramic views of the bay, blending contemporary architectural lines with local cultural touches, creating a unique aesthetic that harmonizes with the world-renowned heritage landscape.

Strategically located within the Grand Bay Hạ Long complex, the villas form a distinguished residential community offering privacy, comfort, and exclusive amenities. With spacious layouts, premium finishes, and seamless connections to surrounding facilities, Grand Bay Hạ Long Villas not only elevate the standard of waterfront living but also stand as a prominent architectural landmark in one of Vietnam’s most iconic destinations.



Sora bay Halong - Quang Ninh

Acreage	Implementation items	Investor
248 ha	Master plan of 3 Peninsulas	BIM GROUP - Suite by Inte Continental

Hung Thang urban area is planned into many sub-areas with different roles:

Peninsula 1: Residential area, with schools and green areas as the center and building a mixed high-rise center.

Peninsula 2: Complex of high-end apartments, planning of traffic connections linking areas and high-end utility areas.

Peninsula 3: 3-storey resort villa area, hotel area, artificial beach, marina

The project is designed with 1/500 planning - landscape and architecture by the team of architects H2X Studio .



Sora bay Halong – Quang Ninh

Acreage

248 ha

Implementation items

Master plan of 3 peninsulas

Investor

BIM GROUP – Suite by Inter Continental



Sora bay Halong – Quang Ninh

Acreage
248 ha

Implementation items
Master plan of 3 peninsulas

Investor
BIM GROUP – Suite by Inter Continental



5 star hotel Sofitel – Haiphong

Sofitel Diamond Crown

Acreage

12.800 m²

Design style

Modern, Futuristic

Implementation items

Interior Design, ID Concept

Project implementation

* Attiko High Energy Lounge * Hanu Restaurant.

The background image shows a sophisticated restaurant interior. The ceiling is dark with curved, recessed lighting. Large glass windows on the right side offer a view of the outside. In the foreground, there is a long, light-colored modular sofa and a small square table with two modern chairs. The table is set with plates of food and glasses. The overall atmosphere is clean, modern, and elegant.

B. Food & Beverage

H2X Studio owns a team of architects with deep expertise in the field of branded F&B and experience working with prestigious operating corporations in the world. We bring unique designs, distilled from the quintessence of the art of enjoying life to create a perfect and aesthetic culinary space.

Each F&B project is created by H2X Studio with its own design language to convey a genuine and unique brand message. Starting with a deep foundation of brand knowledge, H2X Studio applies a comprehensive design process with the most optimal solution.



2024 Best F&B ARCHITECTURE DESIGN

Project

Hispania Nha Trang
Restaurant

• Nha Trang • Vietnam
Design Team: H2X Studio

Designer

Design Manager: Master Of Architect – Giahuy Michael
Lead Designer: Bui Thanh Phuc

Stakeholder/Owner

KDI Holdings

Company

H2X Studio



Hispania Nha Trang | Michelin Star Restaurant

Project	Acreage	Design style	Implementation items	Year of completion
Gran Meliá Nha Trang	1000 m²	Modern	Construction - Interior finishing	2023

Hispania Nha Trang is a project marking the international cooperation of H2X Studio with the world-famous Michelin-starred restaurant chain management brand. Nha Trang, one of the most beautiful bays in the world, is the first destination in Asia of the Hispania brand, following the success of Hispania London and Hispania Brussels. Here, H2X Studio architects have created a masterpiece honoring the spirit of "A life well lived" inspired by the Spanish lifestyle, bringing complete culinary experiences.

Inspired by the organic design of Antoni Gaudí – the father of Catalan Modernism with soft, curving lines simulating the waves of the Mediterranean Sea, H2X Studio architects created a perfect harmony between motifs, metallic materials and brass on the main color scheme of white, beige with a touch of natural blue combined with elegant, luxurious interiors to create a harmonious and charming whole with a bold Spanish style "beyond time and space".





Shibui Restaurant

Project	Acreage	Design style	Implementation items	Year of completion
Gran Meliá Nha Trang	1500 m²	Rustic, Modern, Japanese, Wabi Sabi	Construction – Interior finishing	2023

Inspired by the image of the sunrise over the Kobe sea, Shibui restaurant wears a shirt bearing the artistic imprint of the Land of the Rising Sun with an elegant and luxurious space. The simple, sophisticated decoration combined with high-quality materials such as wood, stone, and glass are carefully selected and harmoniously coordinated by H2X Studio architects.

Coming to Shibui, your culinary experience will be elevated to a new level with premium service according to 6* standards in a truly artistic space with a panoramic view of the ocean.



SHIBUI
SAKE
PAIRING
DINNER

日本酒ペアリング
デイナー







All day dining – Natura Restaurant

Project	Acreage	Design style	Implementation items	Year of completion
Gran Meliá Nha Trang	396 m²	Modern, Tropical	Comprehensive design and construction	2023

Natura Restaurant aims for friendliness and intimacy, so the H2X Studio team of architects chose a modern style combined with tropical features to create a luxurious yet youthful space, suitable for the needs of diverse customers at Gran Meliá Nha Trang.

The unique design lies in the harmonious combination of natural brown wood tones, white walls and green plants, aiming for simplicity but still luxury. High-quality materials from leading brands, delicate details and sharpness in every line, Natura brings an impressive culinary experience both visually and tastefully.







The Thea – Lobby Lounge

Project	Acreage	Design style	Implementation items	Year of completion
Gran Meliá Nha Trang	350 m²	Modern, Tropical	Comprehensive design and construction	2023

The Thea Lobby Lounge aims for friendliness and intimacy, so the H2X Studio team of architects chose a modern style combined with tropical features to create a luxurious yet youthful space, suitable for the needs of diverse customers at Gran Meliá Nha Trang.

The unique design lies in the harmonious combination of natural brown wood tones, white walls and green plants, aiming for simplicity but still luxury. High-quality materials from leading brands, delicate details and sharpness in every line, Natura brings an impressive culinary experience both visually and tastefully.



SAL Bar – Gran Melia

Project	Acreage	Design style	Implementation items
Gran Meliá Nha Trang	30 m²	Modern, Tropical	Comprehensive design & Built

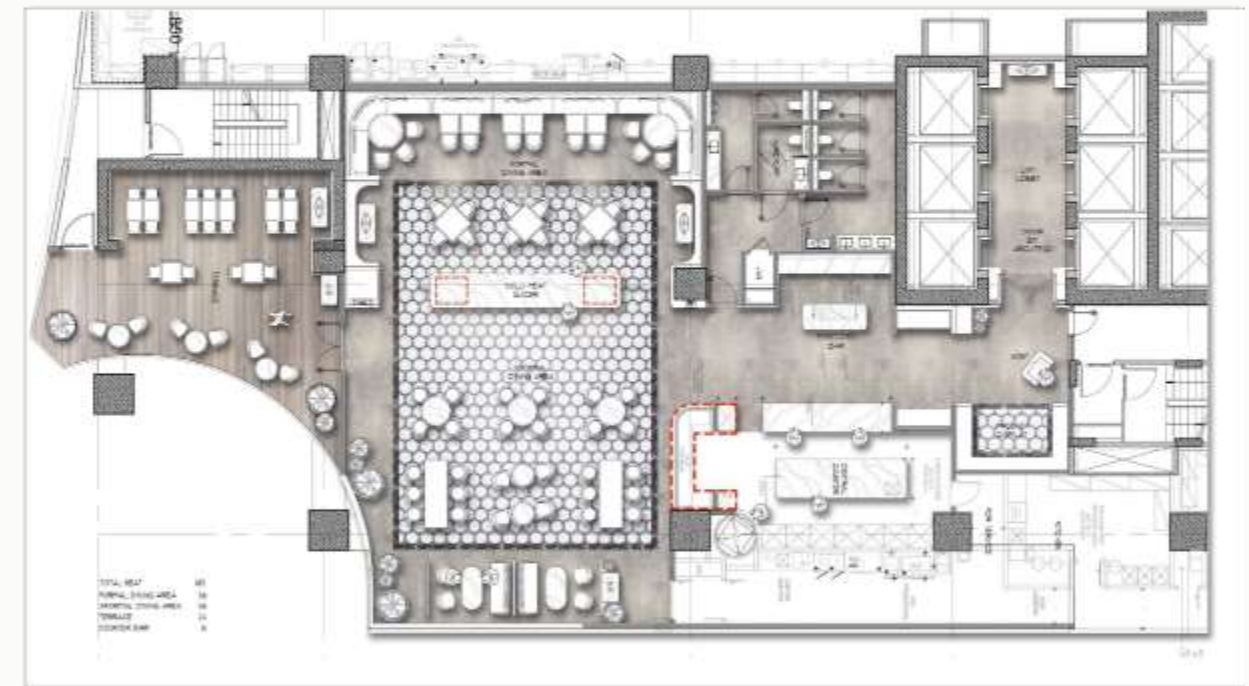
Unveils Sal by Hispania, an open-air tapas sanctuary that captures the essence of Mediterranean leisure. Nestled at the front of the Gran Voyage building, this breezy new venue wraps around the resort’s pool from Sal Bar to the Hispania terrace, offering a fluid and sun-drenched space for social dining.



The Pool – Gran Melia

Project	Acreage	Design style	Implementation items	Year of completion
Gran Meliá Nha Trang	300 m²	Modern, Tropical	Comprehensive design and construction	2023

The Pool offers a refreshing oasis of relaxation and vitality, where the H2X Studio team designed a modern tropical space with elegant lines and natural materials. The setting combines luxury with a vibrant, youthful spirit, creating an inviting atmosphere for leisure and social gatherings. It is crafted to meet the diverse expectations of guests at Gran Meliá Nha Trang, whether they seek calm retreat or dynamic enjoyment under the tropical sun.



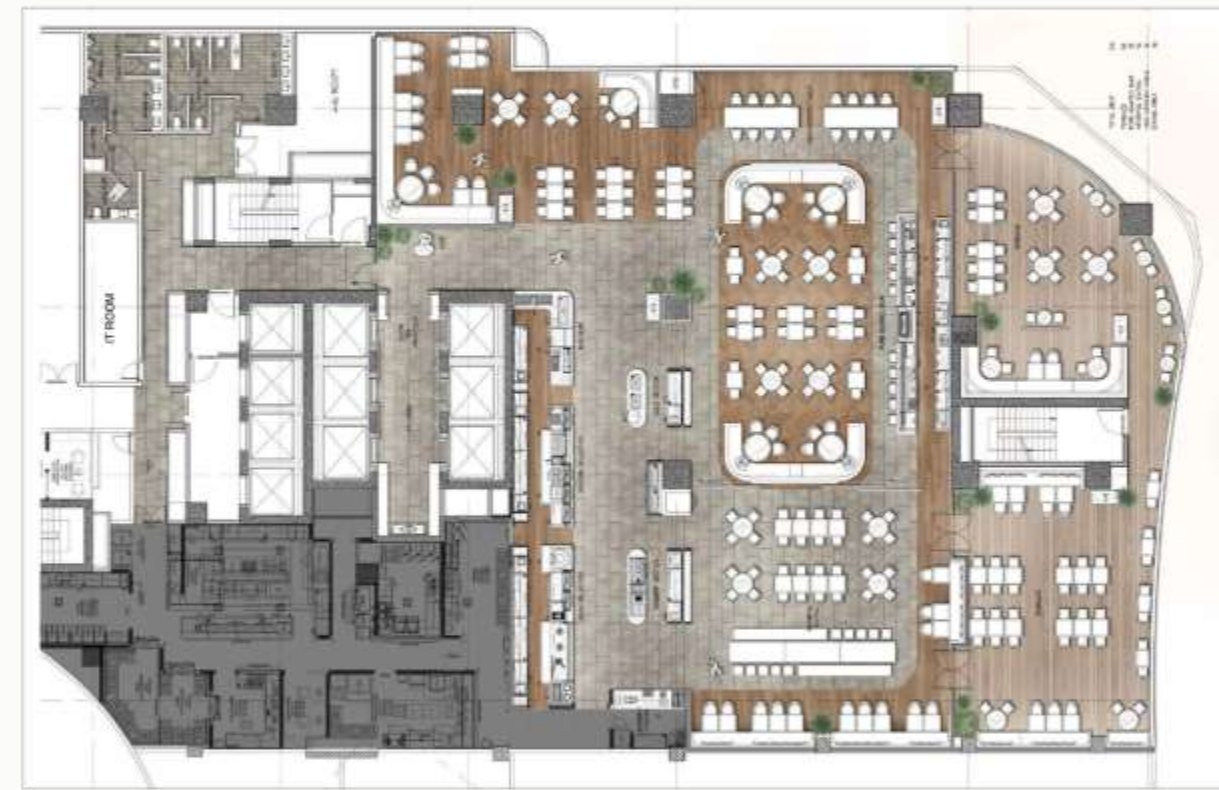
Specialty Restaurant

Project

New World Hotel

Implementation items

ID concept design



All Day Dining – New World Hotel

Project

New World Hotel

Implementation items

ID concept design



Signor Sassi – Italian Fine Dining

Project

Private Member Club

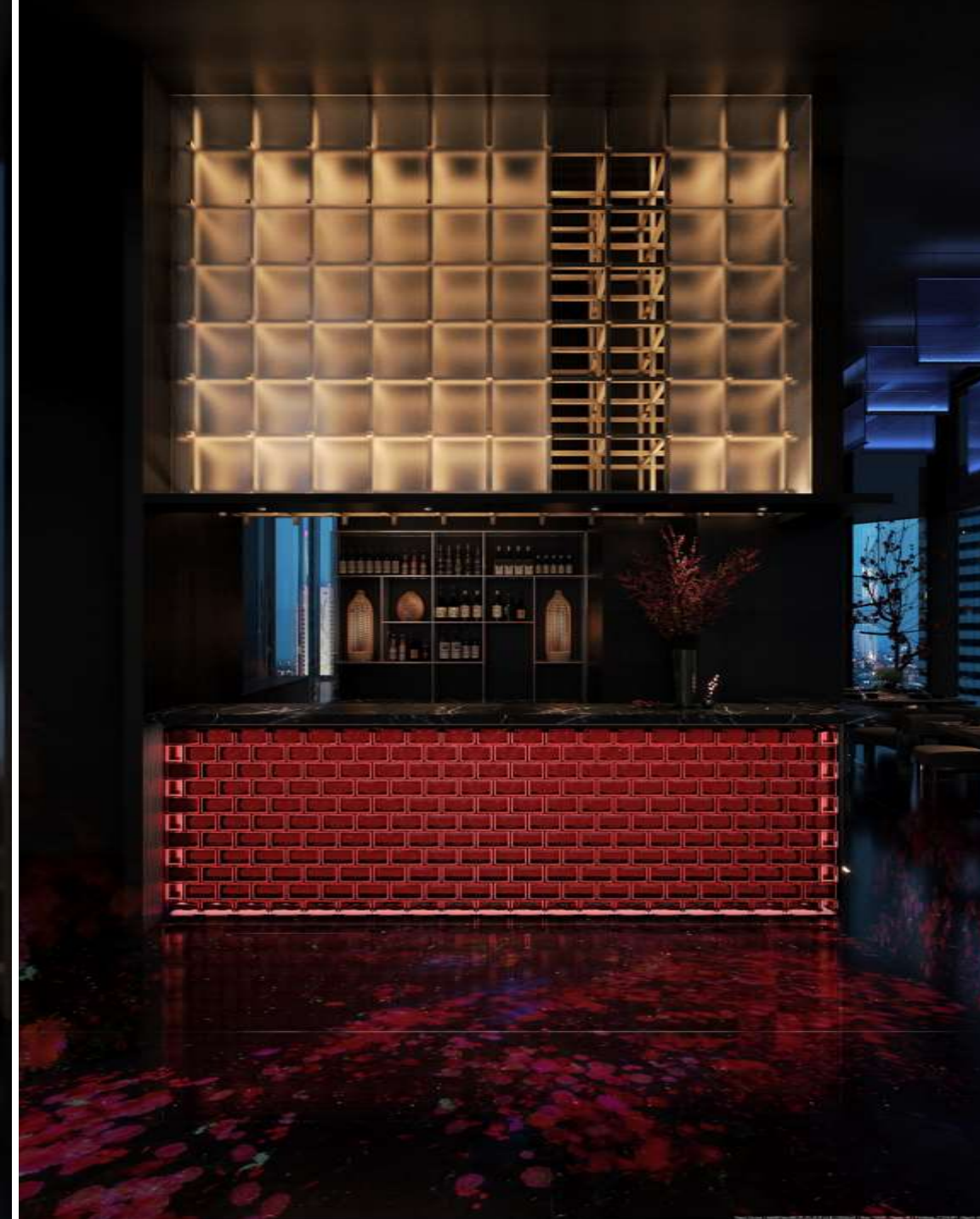
Design style

European Tropical

Implementation items

ID concept design





Miwaku – Landmark 81 | Autograph Collection by Marriott

Project	Management & Operation Unit	Acreage	Design style	Implementation items	Year of completion
Miwaku landmark 81	JW Marriott Autograph collection	200 m ²	Futuristic	Design	2024



Attiko High Energy Lounge | Sofitel Hotel

Project	Management & Operation Unit	Acreage	Design style	Implementation items	Year of completion
Doji Tower HaiPhong	Sunset Hospitality	110 m ²	Modern	Design and construction	2025





Hanu Korean Fine Dining Restaurant | Sofitel Hotel

Project	Management & Operation Unit	Acreage	Design style	Implementation items	Year of completion
Doji Tower HaiPhong	Sunset Hospitality	350 m²	Old Korea	Design and construction	2025





Nonêe Restaurant

Project
H2X Heritage Center

Acreage
110 m²

Design style
Modern

Implementation items
Design and construction

Year of completion
2024

C. Branded Project

Branded Hotel & Residences

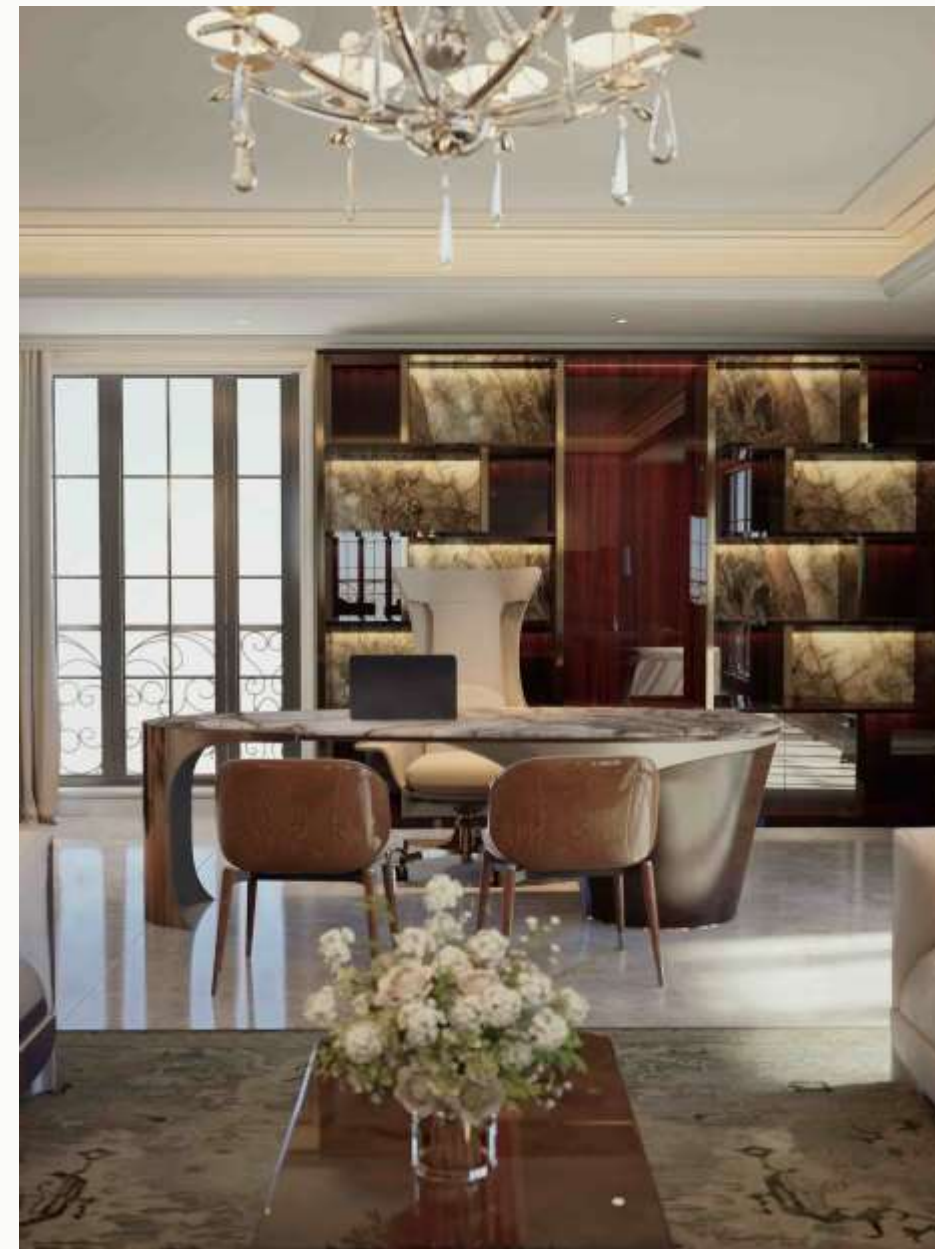
Branded Residences are an asset that affirms class and status for the global elite. Aiming to create a unique lifestyle, these projects are also a perfect way to accumulate assets for the super-rich. Branded projects are a key segment and a source of pride for H2X Studio .

With extensive experience and outstanding expertise, H2X Studio has successfully cooperated with many of the world's leading interior brands, mastering the standards and criteria of brand design.



THE RITZ-CARLTON
RESIDENCES

HANOI



The Ritz Carlton Residences

Project

Ritz Carlton Ha Noi

Design style

Classic

Implementation items

Design & Build full floor Pethhouse



Gran Meliá 6★ Hotes & Resorts – Libera Nha Trang

The Coral Villas Inspired By Porsche Gt115 Yacht

Acreage	Design style	Implementation items	Year of completion
1200 m²	Modern	Design & Build	2023

As one of three special projects of the expensive collection The Coral Special Editions, The Coral Villas inspired by GT115 Yacht is inspired by the Dynamiq GT11 yacht – part of the Porsche Design series and interior products from the Italian "National Interior Treasure" Minotti, "tailor-made" such as Connery sofa covered in leather and hand-stitched, goose feather cushions, coffee table from rosewood... All, combined with the factors of "unique location – sophisticated design – premium service" help the villa of H2X Studio make a strong impression at the Asia Architecture Design Award 2023 with the award: Best Resort Interior Design.

Not only with the classy designs from Minotti, the special feature of The Coral Villas inspired by GT115 Yacht also comes from the iconX sanitary ware set made by Studio F.A.Porsche, full of charm and romance, embellishing the bathroom space. Through 4 versions of titanium, rose gold, carbon fiber, marble gold... with the "golden" ratio of a solid 90-degree right angle, the iconX sanitary ware helps to honor the design of H2X as a "masterpiece" of the world of luxury real estate.







Gran Meliá 6★ Hotes & Resorts – Libera Nha Trang

Super Villa – The Coral Villas Furnished by Roberto Cavalli

Acreage	Design style	Implementation items	Year of completion
1200 m²	Modern	Design & Build	2023

At the end of 2022, H2X will become the official distributor of Roberto Cavalli Home Interiors furniture at The Coral Villa furnished by Roberto Cavalli Home Interiors, part of the 6★ Gran Meliá Nha Trang resort project.

As a part of H2X, H2X Studio is proud to be the unit directly implementing the project from the appraisal process, design, construction, completion, with a team of leading experts and engineers in Italy, creating only 2 super mansions after 6 months as two proud architectural works on the billionaire island.

The process of connecting and joining hands to bring the “giant” Roberto Cavalli Home Interiors to Vietnam for the first time has demonstrated the capacity, prestige and great ambition of H2X – the pioneer and leader in luxury furniture and real estate in Vietnam, continuously named at prestigious international awards.







Armani Casa Branded Villa

Project

Grand Bay Halong – BIM Group

Design style

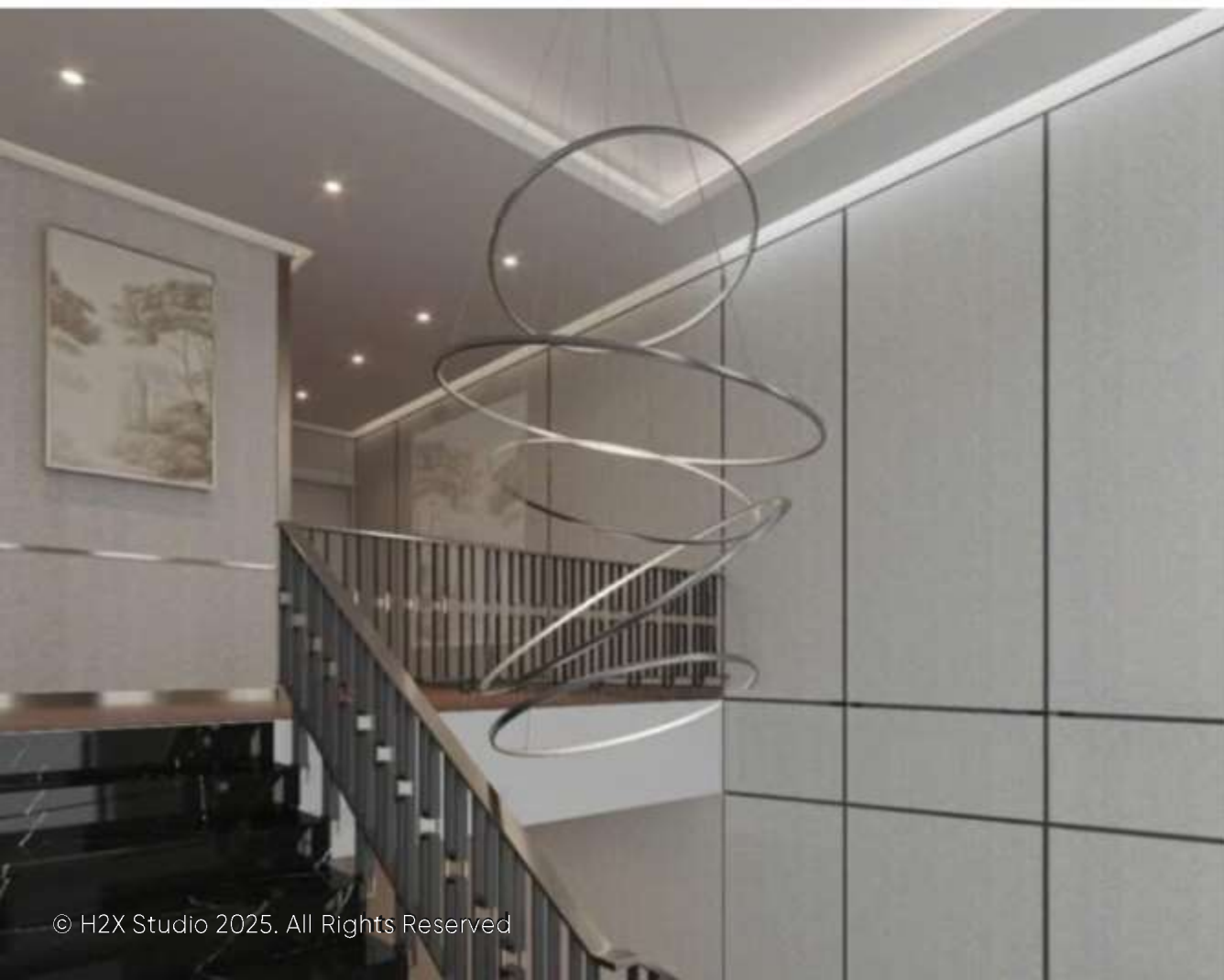
Hiện đại

Implementation items

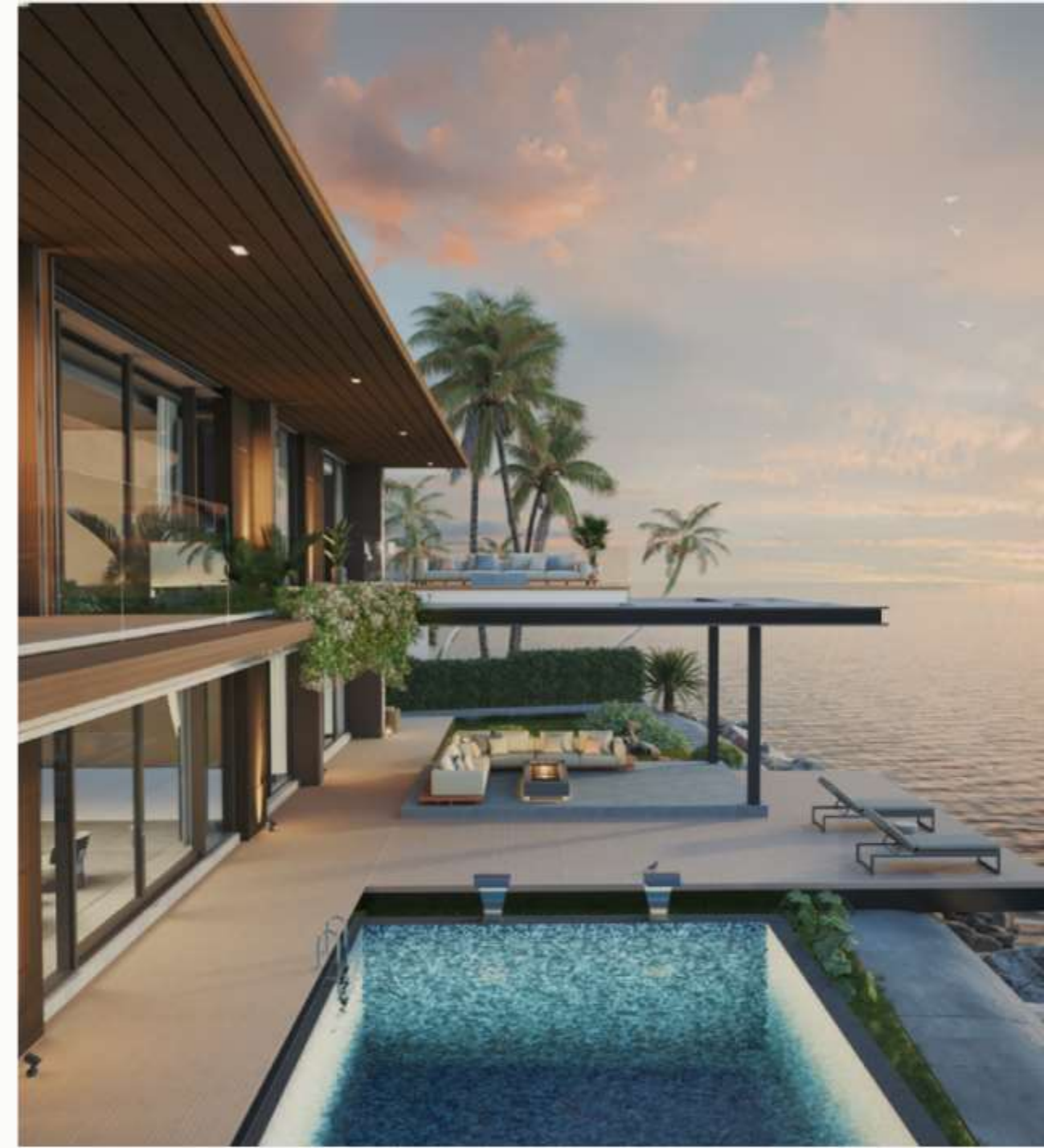
Interior design & architecture

Located in a prime location with unlimited views of Ha Long Bay, a sophisticated combination of timeless architecture and luxurious living space of 5-star resort standards, ARMANI BRANDED VILLA is designed to meet the most rigorous and professional standards.

Each quintessence named Armani Casa is carved in every sophisticated line of the space, every piece of furniture and decoration,... are meticulously selected and are the perfect combination of colors, materials and shapes, creating a unique and classy mark in each space.







Billionaire Island Villa

Project

Billionaire Island Villa

Design style

Modern

Implementation items

Interior design & Architecture



D. Residential Project

Penthouse, Villa, Duplex & Residences



Vinhomes Bason Super Mansion

Project

Bason – HCM city

Acreage

800 m²

Design style

Neo – contemporary

Implementation items

Architecture – Interior Design



Super mansion Bang Lang

Project	Acreage	Design style	Implementation items
Vinhomes Riverside	1100 m ²	Modern	Architecture - Interior Design



Billionaire Island Residence

Project

Billionaire Island Villa

Acreage

1200 m²

Design style

Modern

Implementation items

Architecture - Interior Design



Ecopark Grand The Island 2

Project	Acreage	Design style	Implementation items
Billionaire Island Villa	925 m²	Modern	Architecture – Interior Design





Ecopark Grand The Island 1

Project

Billionaire Island Villa

Acreage

925 m²

Design style

Modern

Implementation items

Architecture - Interior Design



StarLake Villa

Project

Billionaire Island Villa

Acreage

950 m²

Design style

Neo Classic

Implementation items

Supply and installation of branded Fur



Vinhomes Nguyệt Quế Villa

Project

Vinhomes Riverside

Acreage

540 m²

Design style

Modern

Implementation items

Supply and installation of branded Fur

E. Other Feature Projects

H2X Studio has affirmed its class in the market with practical experience in implementing high-class projects with diverse operating purposes and design styles that meet the most stringent European standards.



Chairman VIP Office Suite – Ha Noi

Project	Acreage	Design style	Implementation items
Chairman Banker	500 m2	Luxury Modern	Design & Build



Minotti Monobrand Showroom – Ha Noi

Project

Minotti Flagship

Acreage

600 m2

Design style

Neo Classic – Contemporary

Implementation items

Design & Build – Supply of branded goods



Arclinea Ha Noi Monobrand Showroom

Project

Arclines Flagship

Acreage

100 m2

Design style

Modern – Contemporary

Implementation items

Design & Build – Supply of branded goods



Lema Ha Noi Monobrand Showroom

Project

Lema Flagship

Acreage

100 m2

Design style

Modern- Contemporary

Implementation items

Design & Build – Supply of branded goods



Agape Showroom Ha Noi

Project

Agape First Showroom

Acreage

200 m2

Design style

Modern – Contemporary

Implementation items

Design & Build – Supply of branded goods



Porcelanosa Showroom – Ho Chi Minh

Project

Porcelanosa Flagship

Acreage

300 m2

Design style

Modern- Contemporary

Implementation items

Design & Build – Supply of branded goods

04

05

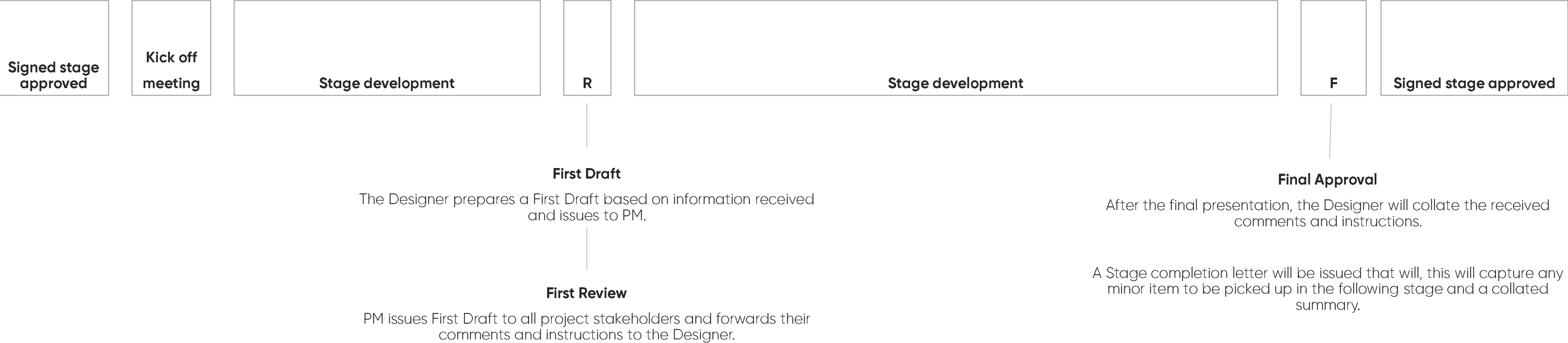
Project Implementation Process

Work Stage Deliverable

Stages of work implementation

N.B: There is an added stage of Appraisal and Briefing to facilitate the understanding of the project approach and planning before proceeding to the Feasibility stage.

There are also adjustments to the duration of each stage based on the Designers evaluation, after taking into account the scope and deliverables, plus the need for review and approval from Clients at each work stage



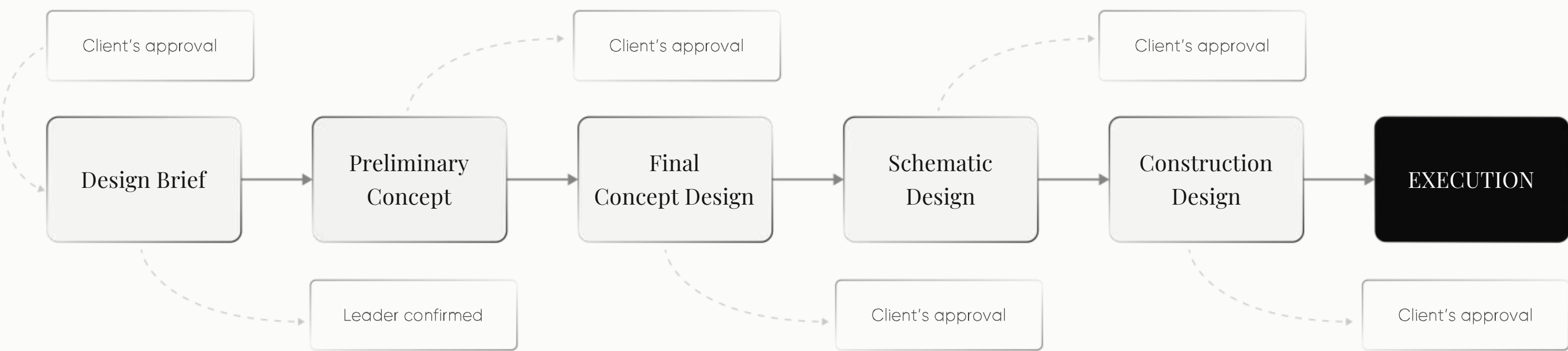
Additional Rounds: Any round requested beyond those stated above will be subject to an extension of time and additional fees as per the AGREEMENT.

Design Process

Proposal for joint project

Our Methodology

We provide a step-by-step method on how we approach a project to achieve the best results at each stage. Here are some key steps throughout the process of executing any project



Our Process

1. Research & Analysis

Review all relevant documents.
Design research.
Receive brief from Client, Architect, ID, and Landscape Designer as design requirements, budgeting, timeline, and other consultants' involvements.

2. Concept Design

Establish potential design criteria.
Survey spatial techniques.
Develop appropriate space schemes. Presentation & design review.

3. Schematic Design

Preliminary mark-up function layout.
Preliminary design schedules & specification.
An indication of the architectural style.
Preliminary budget costing.

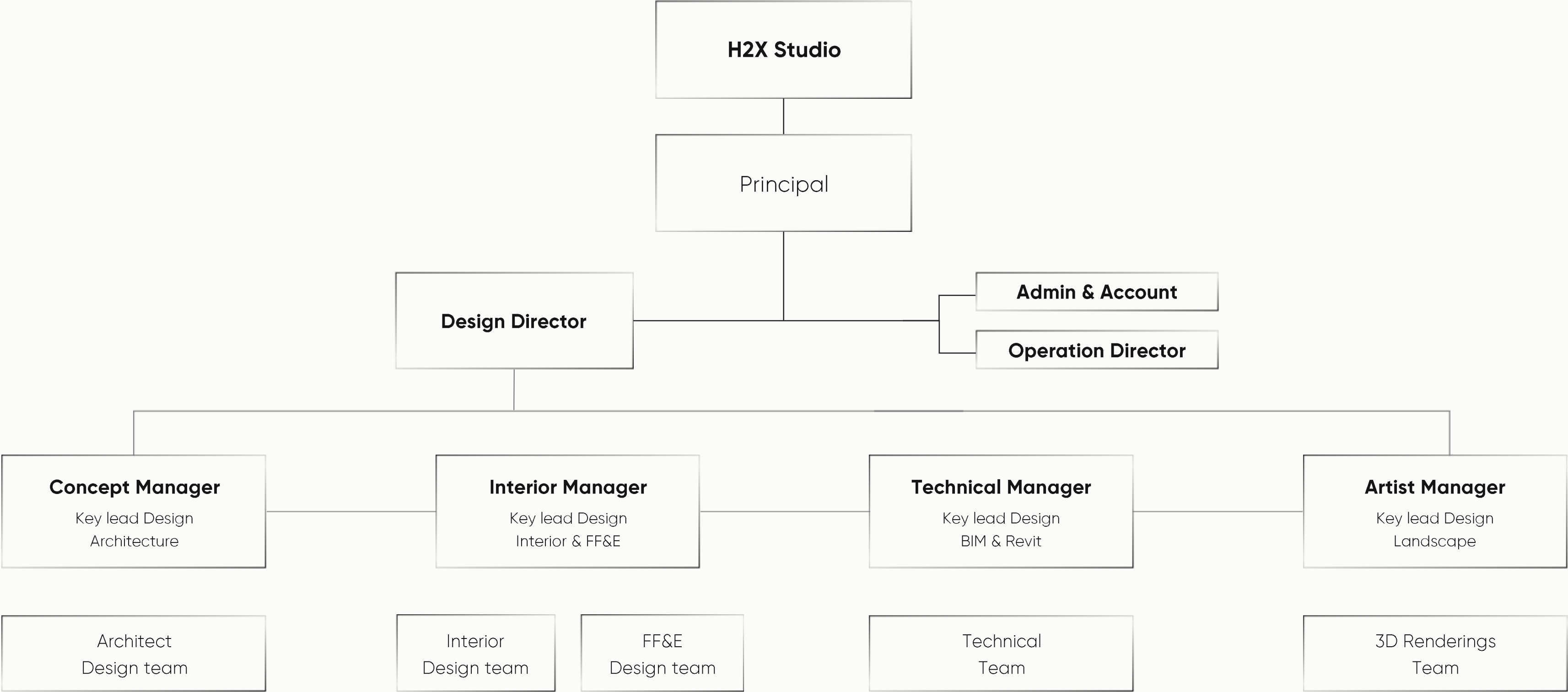
4. Detail Design Construction Documents

This phase commences after approval of the preliminary scheme design and budget.
Completion of all reflected ceiling and the floor layouts & all equipment specifications.
Preparation of final cost schedules for design.
Site trials and mock-ups if any.

5. Implementation & Commissioning

Check the fit-out & loose furniture installation.
Inspect and prepare a list of any outstanding works & defects.
Setting up and commissioning of the design scheme.
Final adhesive on the operation and maintenance.

Project Organisation Chart



Design Work Phase

Preliminary Projected Time Schedule

BRIEFING AND MOBILISATION

LEAD – Client | SUPPORT – AOR/PM

Purpose of the stage:

The purpose of this stage is to ensure the project kicks off with the full design and consultant teams on board, and briefs agreed.

Covered within the stage:

ID will be introduced to the rest of the Design Team.

The Design Team will review overall scopes of work and master-planning to identify if/where there is any scope gap.

The Lead Consultant will ensure ID completes A&B with all the relevant material to kick off the C&S phase; for example: Site plans, elevations, and existing structural and M&E drawings (as DWG. files). And any materials already developed by the Design Team; for example: Site photos, renderings, landscaping.

ID will make a site visit (where possible) accompanied by the Client and Lead Consultant/AOR to review location, surroundings, site restrictions/limitations.

ID and Client to review the brief to check if there have been any updates since contract agreement, to review any guidelines, program requirements and scope of works.

Deliverable:

Meeting to Kick off project

FEASIBILITY (PRE-CONCEPT DESIGN)

LEAD – H2X Studio | SUPPORT – AOR/PM

Purpose of this stage:

The purpose of this stage is to generate a design narrative

Covered within the stage:

Research the unique attributes of the location and site. Including a deeper understanding of the brief and aspirations of the brand.

- Prepare a selection of images to determine the design concept direction by means of photographic references;
- Prepare Preliminary interior zoning layout showing functional program;
- Prepare material board (photographic references).
- Prepare design narrative.
- 1st presentation with Client for interior concept design;

Deliverables

+ Overview Concept Page (DWG/PDF)

Design Work Phase

Preliminary Projected Time Schedule

CONCEPT DESIGN

LEAD – H2X Studio | SUPPORT – AOR/PM

Concept Design will run concurrently with feasibility.

Purpose of the stage:

The purpose of the stage is to establishing an agreed Concept intent and direction, which reflects the character of the project areas covered in the brief.

Covered within the stage:

Narrative Pages: creating a unique point to base the design on.

Mood & Feel presentation: Inspiration images and initial sketches explaining overall look and feel.

Furniture and Fixtures: As part of the Mood & Feel presentation, an initial selection of furniture, lighting, fixtures and fittings would be presented for initial feedback. This would include initial sketches of custom furniture and lighting.

Material boards: Initial presentation of materials for both architectural and upholstery finishes in key areas (areas will have been agreed during A&B).

Deliverables

- + Look & Feel, Moodboard and story (PDF)
- + Coloured Plan
- + 3D colour Renders
- + Digital material board (PDF)
- + All in PDF

SCHEMATIC DESIGN

LEAD – H2X Studio | SUPPORT – AOR/PM

Schematic Design will kick off once Concept Design is approved and signed off (Stage Approval Letter).

Purpose of the stage:

The purpose of this stage is to provide DWG drawings and basic schedules to the design team for development into the Detail Design package. This stage can run concurrent to concept or be issued following concept approval. For best practice, we advise concept approval prior to issuing to the Design team to avoid abortive work for all consultants.

Covered within the stage:

Plans will be clearly annotated with key finishes. An RCP and floor finishes plan is to be included.

Key Elevations: Key elevations will clearly be annotated with key finishes.

(The key elevations taken by the ID will have been agreed on at the end of Concept Design.)

Outline specification schedules: Architectural finishes (to be presented as Index pages with key information for further development by the Owner's in-house ID team)

Deliverables

- + Plans packeage (DWG/PDF)
- + Elevation (DWG/PDF)
- + Table Of materials (Office files/PDF)
 - **General layout plan** showing the arrangement of furniture
 - **Floor finish plan** indicating floor pattern designs and types of floor finishes
 - **Electrical layout** plan showing power outlets and switches
 - **Reflected ceiling plan (RCP)** for coordination with other consultants
 - **Two main sections** showing the elevations of furniture
 - **General material descriptions** for hard finishes will be illustrated on the above plans.

Design Work Phase

Preliminary Projected Time Schedule

DEVELOPMENT DESIGN

LEAD – H2X Studio | SUPPORT – AOR/PM

Development Design will be the design implementation phase that develops from the Schematic Design phase.(Stage Approval Letter).

Purpose of the stage:

The purpose of this stage is to provide DWG drawings and basic schedules to the design team for development into the Detail Design package. This stage can run concurrent to concept or be issued following concept approval. For best practice, we advise concept approval prior to issuing to the Design team to avoid abortive work for all consultants.

Covered within the stage:

This is the stage of developing the entire technical drawing to ensure the design in the right direction of Schematic Design design.

The entire design of the wall and separate items will be shown in this section.

Comes with all technical solutions for the entire project, ensuring the estimation, bidding invitation and the feasibility of the design.

Deliverables

- + Technical documents for the entire interior include the drawings: Fitout, Built-in (DWG/PDF)
- + Technical documents for the entire MEP design (DWG/PDF)
- + Specifitations (Digital list) (Office files/PDF)
- + Loose Furniture list (Office files/PDF)
 - **General layout plan** showing the arrangement of furniture
 - **Loose furniture layout** plan indicating the arrangement and tagging/coding of loose furniture items
 - **Wall finish plan** showing types of wall finish materials
 - **Floor finish plan** indicating floor patterns and finishes
 - **Electrical layout plan** showing power outlets and switches
 - **Integrated switch and lighting layout plan**
 - **Reflected ceiling plan (RCP)** for coordination with other consultants
 - **Interior sections** of key areas showing detailed finishes and technical criteria
 - **Large-scale typical detail drawings** for floors, walls, ceilings, and doors
 - **Large-scale detail drawings** for component elements and other interior items
 - **Plans, elevations, sections, and details** of built-in furniture items

Design Work Phase

Preliminary Projected Time Schedule

CONSTRUCTION DOCUMENTS

LEAD – H2X Studio | SUPPORT – AOR/PM

The Construction Drawings stage is the final phase of the design implementation, developed from the approved Development Design stage. It includes the full set of technical documentation to be used for actual construction on-site.. (Stage Approval Letter).

Purpose of the stage:

The purpose of this stage is to produce a complete set of detailed technical construction drawings (Construction Drawings Package) that will serve as the official documentation for site execution. The documents will include precise technical drawings, specifications, and schedules to ensure accuracy, feasibility, and coordination across all construction activities.

Covered within the stage:

Develop the full set of technical construction drawings based on the approved design, including:

Fit-out and Built-in Drawings

Detailed drawings of walls, ceilings, flooring, loose furniture, and built components

Deliverables

+ Technical documents for the entire interior include the drawings: Fitout, Built-in (DWG/PDF)

+ Specifitations (Digital list) (Office files/PDF)

+ Loose Furniture list (Office files/PDF)

- **General layout plan** showing the overall furniture arrangement
- **Furniture layout plan** indicating the arrangement and tagging/coding of loose furniture items
- **Floor finish plan** showing floor patterns and finish types
- **Wall finish plan** indicating types of wall finish materials
- **Electrical layout plan** showing the location of power outlets
- **Integrated switch and lighting layout plan**
- **Reflected ceiling plan (RCP)** for coordination with other consultants
- **Interior sections** of specific areas showing detailed finish specifications and technical criteria
- **Typical large-scale detail drawings** for floors, walls, ceilings, and doors
- **Large-scale detail drawings** for specific components and other interior items
- **Plans, elevations, sections, and details** of built-in furniture items
- **Schedules and technical specifications** for hard finishes, sanitary fittings, associated equipment, metal accessories, power outlets, and switches
- **FF&E selection**



H2X
STUDIO

Thank You

📞 09.6652.6662

🌐 www.h2xstudio.com.vn

📍 **HeadQuarter Center**, 26 Tran Hung Dao Str, Hanoi.

📍 **H2X Branch**, 199D Nguyễn Văn Hưởng, Thảo Điền, TP HCM